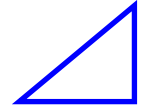


Aviation Ground Fuelling Solutions

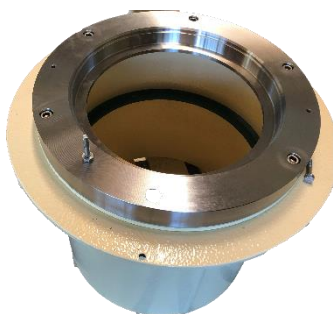
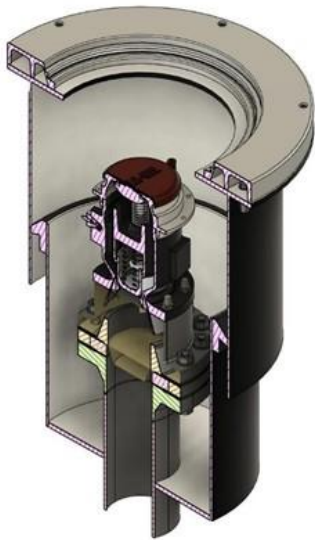


Fuelling products

Hydrant Pit Box

WL4354, WL5225, WL6000, WL7900

WL3640, WL4354-S, WL5225-S



We develop creative, comprehensive, and sustainable engineering solutions for a future where customers can thrive.

Equipped with an intimate understanding of local intricacies, world-class talent, and proactive leadership, we design in close cooperation with our customers modular, flexible start to the art ground fueling equipment.

Benefits

- The unique and modular design allows for the cover, shoulder ring and pit lid to be supplied separately and independently of the 'box' (dustbin).
- Easier and cost effective to stock and shipment.
- Local Distributors / Contractors construct the box themselves.

Additional Features

- Design easily customized for specific applications
- Accepts all valves meeting IP & API recommendations
- Seal for ease of maintenance
- 20" with 18" clear opening and 18" Aluminum lid with individual identification mark.
- The pit lid is load rate according EN124-3:2015 Load Class F900.

Key Features

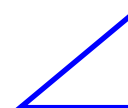
- Flexible, modular two-piece design
- Long-life Steel construction
- Absorbs large vertical and horizontal ground movement.
- Bottom and lateral entry fuel riser flange
- White pigmented GRP with inter gelcoat finish.
- 18" & 20" Pit Lid, Alloy, Hinge, Slider, Tether
- Individual identification mark
- Fully factory assembled.
- API/IP - 1584
- EI - 1540
- EI - 1542
- AIR BP REF: Mech 30
- Load Class EN 124-3 :2015 F900
- FAA AV 150/5320-6D Appendix 3 Part D

Optional

- Stainless Steel Shoulder Ring
- Lateral electric access
- Heated Hydrant Pit Box
- Bottom drainage

AMEC-EUROPE LTD.

Aviation Ground Fuelling Solutions

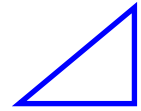


Technical details

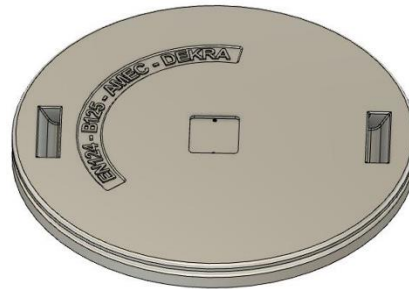
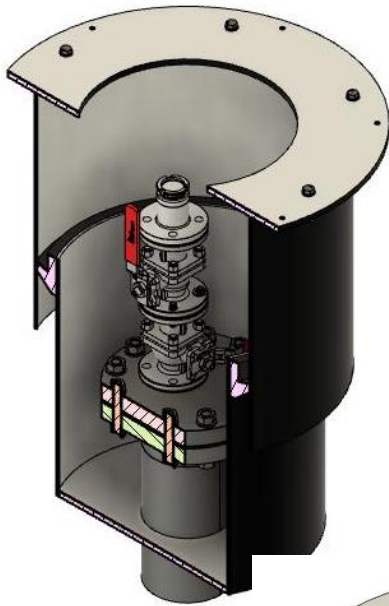
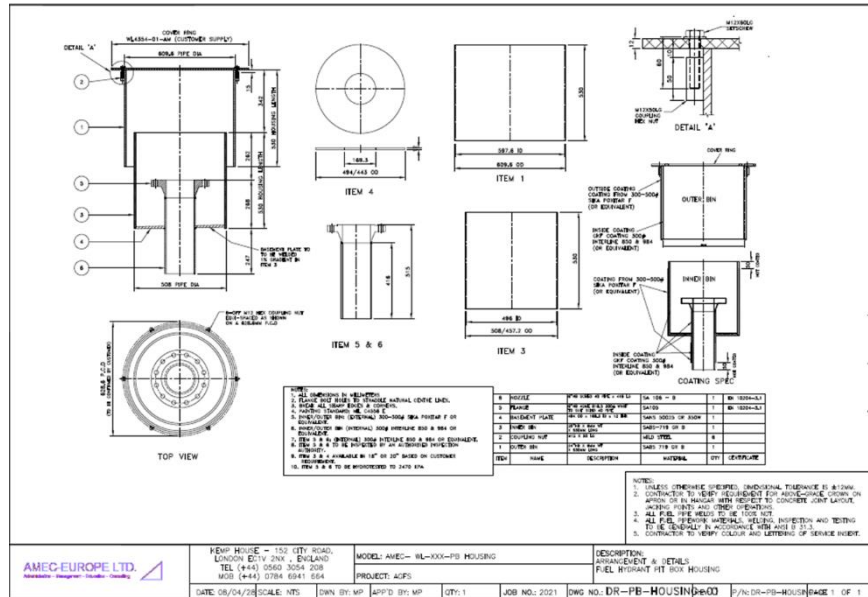
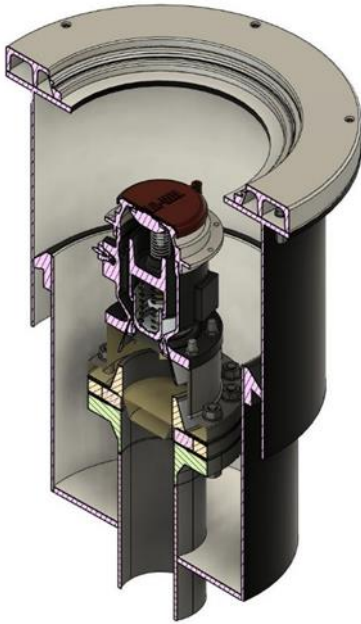
	WL4354	WL5225	WL6000	WL7900	WL3640	WL4354-S	WL5225-S
Opening, mm [in]	457 [18]	457 [18]	457 [18]	457 [18]	457 [18]	457 [18]	457 [18]
Removable frames for maintenance	Yes						
Door type	Two hand lift, slider or 180° hinge	Two hand lift, slider or 180° hinge°	Two hand lift, slider or 180° hinge°	Two hand lift, slider or 180° hinge°	Two hand lift, slider or 180° hinge	Two hand lift, slider or 180° hinge	Two hand lift, slider or 180° hinge
Style	Two-piece (Environmental)				One-piece		
Pit box	Steel						
Materials							
Frame	Carbon steel conforming to BS 4360:43A; optional: MNo. 1.4301 (X5CrNi18-10), AISI 304, (V2A), SUS304						
Pit Lid	Cast aluminium, Al-Alloy AlSi7Mg0,6 / EN AC-42200						
Pit Box Body (Steel)	Carbon steel conforming to BS 4360:43A min. 6 mm thick						
Riser Pipe	ASTM API 5L Grade B Sch 40 or ASTM A106 Grade B Sch 40 or other at customer request						
Riser Flange	ASTM A105 Normalized flange or other at customer request						
Seals	Aviation fuel resistant Nitrile to BS 2751						
Protective coatings							
Inner surfaces of pit box (steel)	CABOLINE PHENOLINE 187 or Equivalent acc. MIL C4556 E						
Outer surfaces of pit box and riser pipe (steel)	CABOLINE BITUMASTIC 300M or Equivalent acc. MIL C4556 E						
Riser pipe bore (4" and above)	Interline 850 or Equivalent (Buff or white acc. MIL C 4556 E						
Fabrication and testing							
Riser pipe section	Pipework manufactured and fabricated generally in accordance with ANSI B31.3						
Testing	100% radiography of all but welds 100% NDT of all fillet welds						
Load Testing of Covers	Load test according EN124-3:2015 F900 From 2020: with 900 KN test load in compliance with FAA AC 150/5320-6D Appendix 3 Part D						
Quality assurance							
Quality Management System complying with ISO 9001-2008							

AMEC-EUROPE LTD.

Aviation Ground Fuelling Solutions

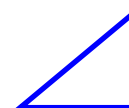


Dimensions & Schematic view



AMEC-EUROPE LTD.

Aviation Ground Fuelling Solutions



Accessories

- Installation Kit
- Hinge Kit WL6000
- Stand studs
- Blanking Flange Assembly
- Adaptation rings
- Gaskets

Other hydrant pit products

- AMEC Pit Lid
 - WL4865 (Dia. 18")
 - WL6000 (Dia. 20")
- AMEC Shoulder Ring
 - SR4865
 - SR6000
- AMEC High-Low Point
 - WL4231
- AMEC Accessory
 - Distance Ring
 - WL6000 Elevation Ring
- CLA-VAL
 - Hydrant Pit Valve
 - Hydrant Isolation Valve
- Rolling Cover Pit Assembly
- AMEC Heated Hydrant Pit Box Kit
 - For artic use
 - Ex-Zone approved.
- AMEC Hydrant Pit Box Draining
 - 1" bottom access for central draining

Distribution/Partners

Africa



e'Afrifil (Pty) Ltd.
1 Cnr Chilworth & Pressburg Roads
ZA 1645 Johannesburg
Tel. +27 11 452 5444

Asia



FLOWCO ASIA PACIFIC (PTE) LTD
Mailing Address: Tampines Central P.O. Box 0266 Singapore 915209
3018 Bedok North St 5 #01-21 EASTLINK Singapore 486132
Tel: (65) 6542 4707 Fax: (65) 6542 4702 Email: Flowco@singnet.com.sg

Australia/South Pacific



148 Newton Road Wetherill Park NSW
2164 Australia Tel +61 490 428 863

America



Mr. T. Landmann
Phone: +44(0)784 6941 664
E-mail: sales@amec-europe.com

EUROPE



Mr. T. Landmann
Phone: +44(0)784 6941 664
E-mail: sales@amec-europe.com

India



E-71, Additional MIDC Patalganga
Karade Khurd, Tal: Panvel, Dist: Raigad,
Maharashtra 410220 – INDIA
Phone: +91 21 92 25 22 98-99
E-Mail: welcome@titan-asia.com

Manufacturer



Please contact our sales for further
Information at www.agfs.aero

AMEC-EUROPE LTD.

Note: specifications are subject to change without notice.