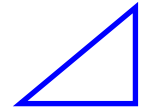


# Aviation Ground Fuelling Solutions



## Fuelling products

### Hydrant Pit Box

WL-4354-01-AM (xxx),

WL-5225-01-AM (xxx)



We develop creative, comprehensive and sustainable engineering solutions for a future where customers can thrive.

Equipped with an intimate understanding of local intricacies, world-class talent and proactive leadership, we design in close cooperation with our customers modular, flexible start to the art ground fueling equipment.

#### Benefits

- The unique and modular design allows for the cover, shoulder ring and pit lid to be supplied separately and independently of the 'box' (dustbin).
- Easier and cost effective to stock and ship.
- Local Distributors / Contractors construct the box themselves.

#### Additional Features

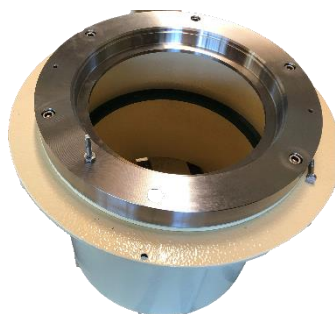
- Design easily customized for specific applications
- Accepts all valves meeting IP & API recommendations
- Seal for ease of maintenance
- 18" Aluminium lid with individual identification mark.
- The pit lid is load rate according EN124-3:2015 Load Class E600 - F900.

#### Key Features

- Modular, flexible & two-piece design
- Steel construction for long life service
- Absorbs large vertical and horizontal ground movement
- Bottom and side entry fuel riser flange
- White pigmented GRP with inter gel-coat finish
- 18" Pit Lid, Aluminium, Hinge, Slider, Tether
- Individual identification mark
- API/IP - 1584
- EI - 1540
- EI - 1542
- AIR BP REF: Mech 30
- ATA 103 - P.2.5.8
- Test Load EN 124-3 :2015 F900
- FAA AV 150/5320-6D Appendix 3 Part D

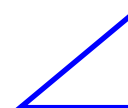
#### Optional

- Stainless Steel Shoulder Ring
- Fully factory assembled



## AMEC-EUROPE LTD.

# Aviation Ground Fuelling Solutions

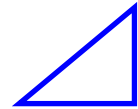


## Technical details

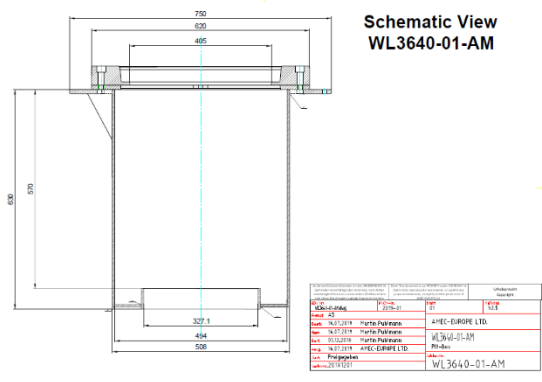
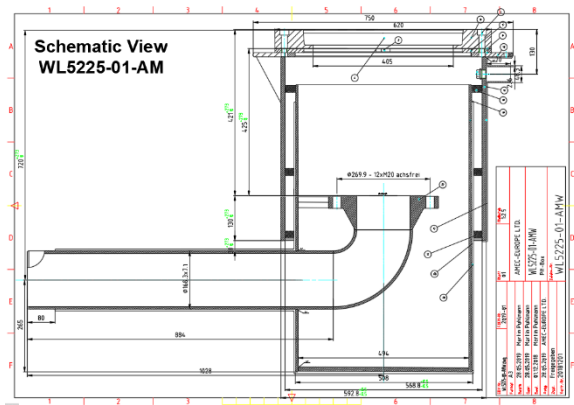
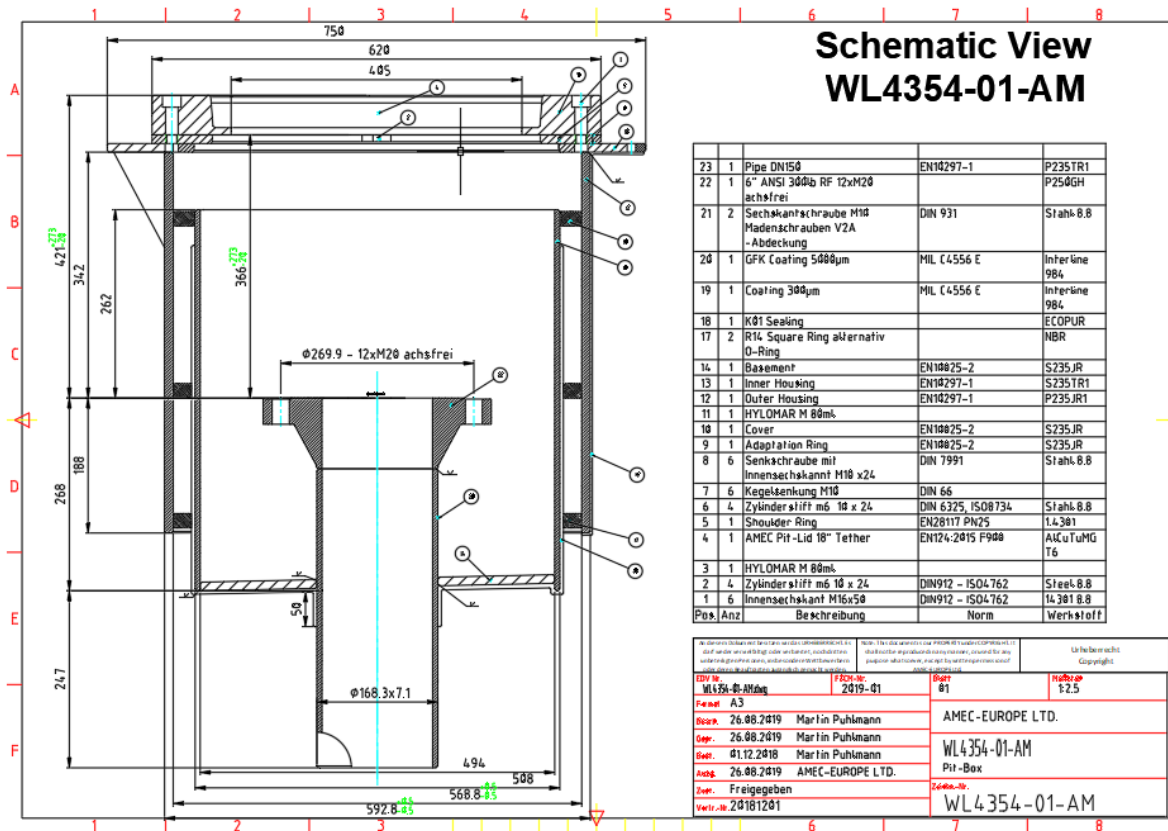
	WL4354-01-AM	WL5225-01-AM	WL6000-01-AM	WL7900-01-AM	WL3640-01-AM	WL4354-01-AM-S	WL5225-01-AM-S
Opening, mm [in]	457 [18]	457 [18]	457 [18]	457 [18]	457 [18]	457 [18]	457 [18]
Removable frames for maintenance	Yes						
Door type	Two hand lift or slider or 180°	Two hand lift or slider or 180°	Two hand lift or slider or 180°	Two hand lift or slider or 180°	Two hand lift or slider or 180°	Two hand lift or slider or 180°	Two hand lift or slider or 180°
Style	Two-piece (Environmental)				One-piece		
Pit box	Steel						
<b>Materials</b>							
Frame	Carbon steel conforming to BS 4360:43A; optional: WNr. 1.4301 (X5CrNi18-10), AISI 304, (V2A), SUS304						
Pit Lid	Cast aluminium, Al-Alloy AlSi7Mg0,6 / EN AC-42200						
Pit Box Body (Steel)	Carbon steel conforming to BS 4360:43A min. 6 mm thick						
Riser Pipe	ASTM API 5L Grade B Sch 40 or ASTM A106 Grade B Sch 40 or other at customer request						
Riser Flange	ASTM A105 Normalised flange or other at customer request						
Seals	Aviation fuel resistant Nitrile to BS 2751						
<b>Protective coatings</b>							
Inner surfaces of pit box (steel)	Interline 984 (white) acc. MIL C4556 E						
Outer surfaces of pit box and riser pipe (steel)	Interzone 954 two part epoxy barrier coat						
Riser pipe bore (4" and above)	Interline 850 (Buff or white acc. MIL C 4556 E						
<b>Fabrication and testing</b>							
Riser pipe section	Pipework manufactured and fabricated generally in accordance with ANSI B31.3						
Testing	100% radiography of all but welds 100% NDT of all fillet welds						
Load Testing of Covers	Load test according EN124-3:2015 E600 alternative F900 From 2020: with 900 KN test load in compliance with FAA AC 150/5320-6D Appendix 3 Part D						
<b>Quality assurance</b>							
Quality Management System complying with ISO 9001-2008							

AMEC-EUROPE LTD.

# Aviation Ground Fuelling Solutions

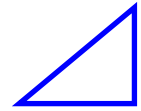


## Dimensions & Schematic view



AMEC-EUROPE LTD.

# Aviation Ground Fuelling Solutions



## Accessories

- Installation Kit
- Hinge Kit WL6000-01-AM
- Stand studs

## Other hydrant pit products

- AMEC Pit Box
  - WL4354-01-AM
  - WL5225-01-AM
  - WL6000-01-AM
  - WL7900-01-AM
  - WL3640-01-AM
  - WL4354-01-AM-S
  - WL5225-01-AM-S
- AMEC High-Low Point
  - WL4231-01-AM

- Blanking Flange Assembly
- Adaptation rings

- AMEC Accessory
  - Distance Ring
  - WL6000-01-AM Elevation/Raising Ring
- CLA-VAL
  - Hydrant Pit Valve
  - Hydrant Isolation Valve
- Rolling Cover Pit Assembly
- AMEC Consulting Service
  - EPC – EPCM
  - Project Management

## Global Network

### Africa

### Spain



Cetil Dispensing Technology, S.L.  
Calle Pelaya, 37. P.I. Río de Janeiro  
28110 - Algete (Madrid) - España  
Tel.: +34 916 287 651  
Fax: +34 916 287 653  
cetil@cetil.com | www.cetil.com

### Asia

FLOWCO



FLOWCO ASIA PACIFIC (PTE) LTD  
Mailing Address: Tampines Central P.O. Box 0266 Singapore 915209  
3018 Bedok North St 5 #01-21 EASTLINK Singapore 486132  
Tel: (65) 6542 4707 Fax: (65) 6542 4702 Email: [Flowco@singnet.com.sg](mailto:Flowco@singnet.com.sg)

### India

AMEC-EUROPE LTD.

Administration – Management – Education – Consulting

Post Box India

c/o Nasar Hussain - #107 - 108, JN Complex - Above KFC Gunfoundry

Abids - 500001 - Hyderabad - Telangana - India

Mobil +91 86699 913 16 – E-Mail [nhussain@amec-europe.com](mailto:nhussain@amec-europe.com) - [www.agfs.aero](http://www.agfs.aero)

## Manufacturer

KRAUSE®  
GUSSPRODUKTE

[www.krause-gussprodukte.de](http://www.krause-gussprodukte.de)

  
TUBETEC  
GOLDVERBODENAI INNSTECHNIK  
[www.tube-tec.de](http://www.tube-tec.de)

Please contact our sales for further  
Information at [www.agfs.aero.com](http://www.agfs.aero.com)

Note: specifications are subject to change without notice.

AMEC-EUROPE LTD.